



DOMESTIC HOT WATER MODULE

the TANKLESS COIL ALTERNATIVE



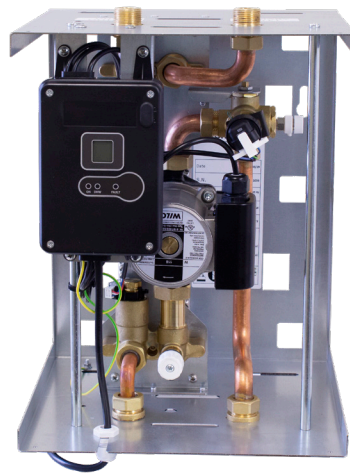
The Domestic Hot Water (DHW) Module is a great way to make domestic hot water using an existing boiler.

The Module incorporates a **brazed plate stainless steel heat exchanger**, a **patented two way valve** with stepper motor, a **circulator pump**, a **flow sensor** and **electronic temperature controls**.

The pump is sized to overcome the friction losses of the boiler and the heat exchanger. In partnership with the two way valve it provides the correct amount of boiler water flow to deliver DHW at the desired temperature.

DHW Module Features

- Connects to any type of boiler that includes low limit function to maintain boiler temperature
- Digital control has the ability to set a consistent DHW temperature from 108°F - 140°F
- Brazed plate stainless steel heat exchanger offers lower pressure drop than tankless water coils with nearly 100% heat transfer efficiency
- Simple and flexible installation - mounts on a wall near the boiler as an additional heating zone
- Compact design with insulated cover and a standard 120 volt power cord
- Easy to service and clean
- 1-Year Limited Warranty



The Ideal
Companion for
Our EXB Series
3 Pass Oil Boiler



RATINGS

3-PASS BOILER MODEL	FIRING RATE		HEATING CAPACITY	DHW FLOW RATE			
	(gph)	(Btu/h)	(Btu/h)	(gpm @ 77°F rise)	(gpm @ 70°F rise)	(gpm @ 60°F rise)	(gpm @ 50°F rise)
EXB4075	0.75	105,000	92,000	2.25	2.48	2.89	3.47
EXB4095	0.95	133,000	114,000	2.85	3.14	3.66	4.39
EXB4110	1.10	154,000	132,000	3.20	3.52	4.11	4.93
EXB5100	1.00	140,000	123,000	3.00	3.30	3.85	4.62
EXB5115	1.15	161,000	139,000	3.50	3.85	4.49	5.39
EXB5135	1.35	189,000	161,000	3.95	4.35	5.07	6.08
EXB6130	1.30	182,000	160,000	4.05	4.46	5.20	6.24
EXB6145	1.45	203,000	176,000	4.50	4.95	5.78	6.93
EXB6165	1.65	231,000	198,000	4.90	5.39	6.29	7.55
EXB7165	1.65	231,000	202,000	5.00	5.50	6.42	7.70
EXB7180	1.80	252,000	217,000	5.35	5.89	6.87	8.24
EXB7190	1.90	266,000	228,000	5.75	6.33	7.38	8.86

CONNECTIONS

3/4" Copper Sweat

ELECTRICAL

120 V ac, 60 hertz, 1 phase, less than 2 amps

DIMENSIONS

HEIGHT	WIDTH	DEPTH	WEIGHT
15"	11.8"	12"	28.5 lbs.

MINIMUM DHW FLOW

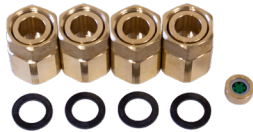
0.53 gpm

MAXIMUM WORKING PRESSURE

43.5 psi Boiler Side, 145 psi DHW Side

Includes:

- (4) 3/4" Straight to NPT Union with Gasket
- (2) Flow Regulators
 - 3.2 gpm (installed)
 - optional 5.3 gpm (loose)



- Control
- Circulator Pump
- Flow Sensor
- Heat Exchanger
- Power Cord

