



CONDENSING GAS FIRED  
FLOOR OR WALL MOUNTED  
BOILER

**PARTS, KITS &  
OPTIONAL ACCESSORIES**

**Model  
DMG-380**

ORDERING INSTRUCTIONS  
ORDER PARTS THROUGH YOUR NEAREST SUPPLIER.  
WHEN ORDERING PARTS, OBTAIN MODEL NUMBER AND SERIAL NUMBER  
FROM DATA PLATE ON YOUR BOILER.  
INCLUDE FOLLOWING INFORMATION WHEN ORDERING.

PART NUMBER \_\_\_\_\_

PART DESCRIPTION \_\_\_\_\_

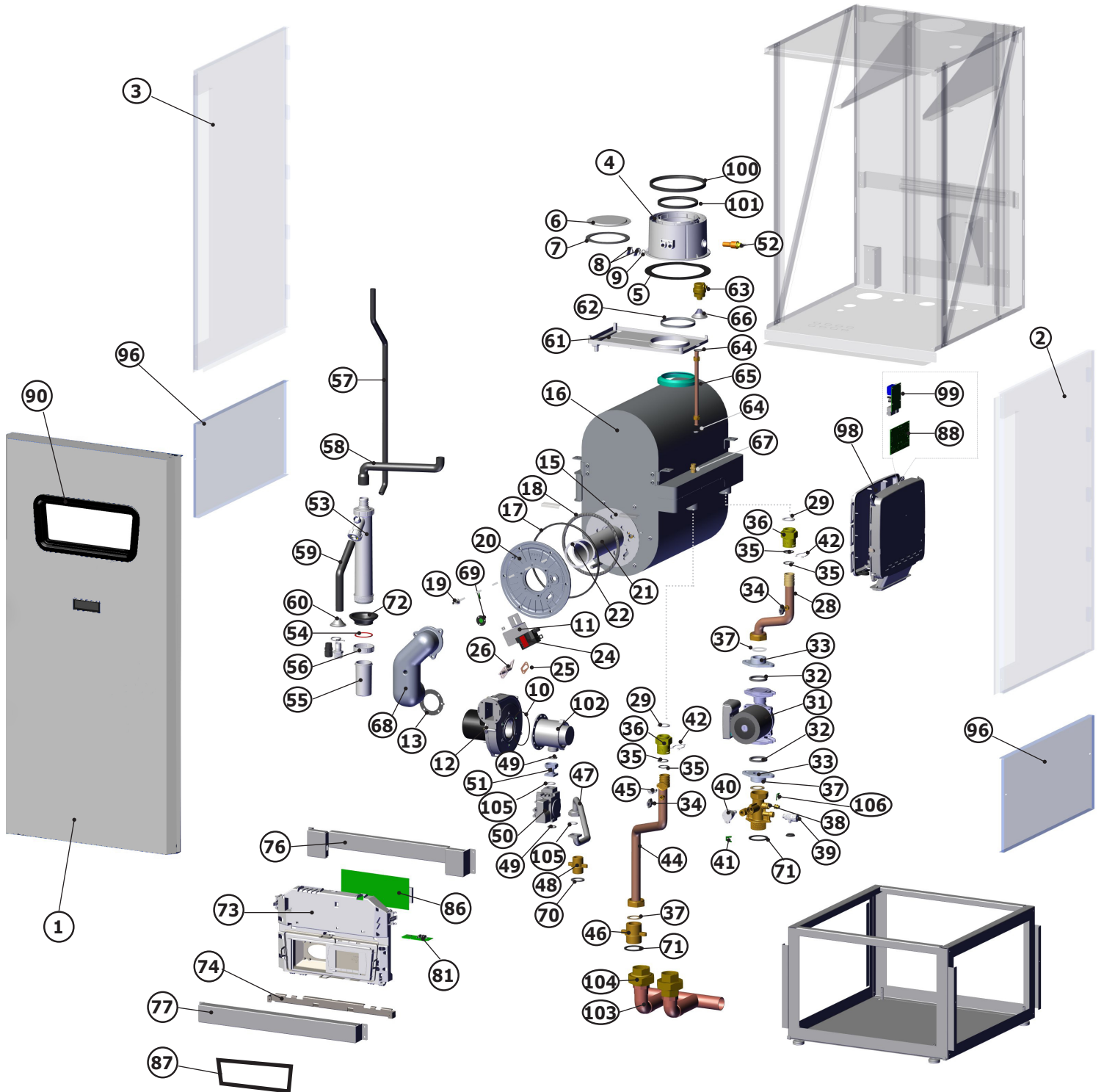
BOILER MODEL NUMBER \_\_\_\_\_

BOILER SERIAL NUMBER \_\_\_\_\_



MANUFACTURED BY:  
ECR INTERNATIONAL INC.  
2201 DWYER AVENUE, UTICA, NY 13501  
TEL. 800 253 7900  
[WWW.ECRINTERNATIONAL.COM](http://WWW.ECRINTERNATIONAL.COM)  
PN 240011665 REV. G [01/31/2020]

# Model DMG-380



\* NOT SHOWN

### DESCRIPTION OF PARTS

ITEM	PN	DESCRIPTION
1	550003295	FRONT PANEL KIT
2	550003294	RIGHT PANEL KIT
3	550003293	LEFT PANEL KIT
4	550003291	KIT, RPLMT, FLUE CONNECTION, 380
5	BD710450601V	FLUE CONNECTION GASKET
6	BD000005116111	COVER PLATE - TWIN PIPE INTAKE
7	BD000005412421	GASKET - COVER PLATE
8	BD7718578	TEST POINT PLUG SCREW HOLE
9	BD710107801V	O-RING TEST PORT PLUG
10	BD000003402101	O-RING VENTURI 70X3
11	109009904	SPARK GENERATOR BRACKET
12	550003277	FAN
13	BD710115602V	GASKET FAN/AIR GAS DUCT
*14	550003284	HEAT EXCHANGER REAR INSULATION
*15	550003285	HEAT EXCHANGER FRONT INSULATION
16	550003284	HEAT EXCHANGER KIT
17	BD711405001V	HEAT EXCHANGER DOOR RING SEAL
18	BD000005212781	HEAT EXCHANGER DOOR ROPE SEAL
19	BD711427701V	THERMOSTAT- HEAT EXCHANGER DOOR
20	550003285	HEAT EXCHANGER DOOR
21	550003278	BURNER 100 KW
22	BD710624301V	BURNER GASKET 380
*23	BD721804702V	WIRING HARNESS X5-IGNITER
24	550003250	IGNITION 115V
25	BD710185302V	IGNITER GASKET
26	550003249	ELECTRODE - IGNITION
28	550003283	PUMP HEAT EXCHANGER PIPE
29	BD000003402291	GASKET, HEAT EXCHANGER PIPE CONNECTION
30	BD710119701V	GASKET, 39X27X2
31	550003280	PUMP GRUNDFOS UP 26-96F
32	BD722323301V	PUMP GASKET
33	BD72233401V	PUMP FLANGE ADAPTER
34	BD722601801V	NTC WATER SENSOR
35	BD000005400401	O-RING: HEAT EXCHANGER PIPE ADAPTER
36	BD710372402V	ADAPTER - HEAT EXCHANGER PIPE CONN.
37	BD000005402141	FLAT GASKET - G1-1/2
38	550003281	RETURN CONNECTION BLOCK
39	BD710188101	ON-BOARD DRAIN
40	BD710109101V	WATER PRESSURE SENSOR
41	BD710654101V	CLIP-WATER PRESSURE SENSOR
42	BD000005116121	CLIP-ADAPTER HEAT EXCHANGER PIPE CONN.
*43	VR00102	PRESSURE RELIEF VALVE
44	550003282	FLOW PIPE 1.100
45	BD710626001V	HIGH LIMIT TEMPERATURE SWITCH
46	BD721700201V	SUPPLY CONNECTION
47	550003288	GAS PIPE
48	550003287	GAS CONNECTION
49	BD000005402011	O-RING - GAS VALVE
50	550003276	GAS VALVE
51	BD722406402V	ADAPTER GAS VALVE TO VENTURI

ITEM	PN	DESCRIPTION
52	BD710682402V	FLUE SENSOR
53	550003279	CONDENSATE SYPHON
54	BD722148901V	GASKET SYPHON
55	BD722148701V	CONDENSATE SYPHON CUP
56	BD722148801	CONDENSATE SYPHON NUT
57	BD721708301V	HOSE CONDENSATE TRAY
58	BD721548801V	HOSE CONDENSATE HEAT EXCH.
59	BD721705201V	HOSE CONDENSATE DISCHARGE
60	BD000005409252	GASKET - DISCHARGE HOSE
61	BD710373401V	CONDENSATE TRAY
62	BD710373101V	SEAL - HEAT EXCHANGER FLUE
63	BD000005652731	AIR VENT
64	BD710189001V	GASKET G3/8
65	BD710411901V	PIPE - AIR VENT
66	BD710194601V	GROMMET - AIR VENT PIPE
67	BD0000032024441	NIPPLE - G3/8
68	550003286	AIR/GAS MANIFOLD
69	550003157	SIGHT GLASS KIT
70	BD710397801V	FOAM GASKET GAS CONNECTION
71	BD710445901V	FOAM GASKET WATER CONN.
72	BD710440001V	GROMMET - CONDENSATE TRAP
73	550003271	CONTROL BOX, UI
74	BD721871101V	CONTROL BOX HINGE
*75	109009850	BRACKET, PCB, AUX, BOX
76	109009852	BRACKET, CONTROL, TOP
77	109009853	BRACKET, CONTROL, BOTTOM
*78	240011685	HARNESS, PCBX4, POWER TO FAN
*79	240011686	HARNESS, PCBX6, TO GAS VALVE
*80	240011689	HARNESS, PCBX10, SENSOR/PSU
81	BD760299003V	CONTROLLER SAFETY SU-01
*82	240011690	HARNESS, SCU BUS WRG, X11-X2
*83	240011691	HARNESS, SCU BUS WRG, X2-K1, AUX
*84	BD764979601V	PARAMETER STICK
*85	240011688	HARNESS, PSBX9, TO SAFETY/FAN
86	550003268	PCB PCU04 NA ASSY
87	240011867	SEAL, CONTROL FACE
88	550003266	PCB SCU-S02
*89	BD722577701V	HARNESS, POWER, SUPPLY , AUX CONT.
90	108000199	BEZEL, WINDOW
96	109009844	PANEL SIDE, LOWER RIGHT
97	109009845	PANEL SIDE LOWER LEFT
98	BD764986901V	SCU ELECTRIC BOX
99	550003267	PCB HONEYWELL OTZTC
100	BD710381002V	GASKET FOR PIPE D16.380
101	BD710381301V	GASKET FOR PIPE D11.380
102	550003292	VENTURI, NG
103	550003352	PIPING MANIFOLD
104	240010802	1-1/2 UNION
105	BD000005405001	GASKET, G1 22X30, 3X2 WRC
106	BD710110601V	CLIP, HYDROBLOCK PLUG

## KITS - HEAT EXCHANGER & COMPONENTS

### KIT 550003284 - 380 HEAT EXCHANGER REPLACEMENT KIT INCLUDES:

POS	DESCRIPTION	QTY
16	HEAT EXCHANGER 100KW	1
17	HEAT EXCHANGER DOOR RING SEAL	1
18	HEAT EXCHANGER DOOR ROPE SEAL	1
70	FOAM GASKET CONNECTION	1
29	GASKET HEAT EXCHANGER PIPE CONN.	2
5	FLUE CONNECTION GASKET	1
37	FLAT GASKET -G1-1/2	1
30	GASKET, 39X27X2	2
62	SEAL- DISCHARGE HOSE	1
*	INSTRUCTIONS - 240011719	1

### KIT 550003285 - 380 HEAT EXCHANGER DOOR REPLACEMENT KIT INCLUDES:

POS	DESCRIPTION	QTY
20	HEAT EXCHANGER DOOR	1
69	SIGHT GLASS WITH GASKET	1
17	HEAT EXCHANGER DOOR RING SEAL	1
19	SAFETY THERMOSTAT 260°C HX DOOR	1
18	COMBUSTION CHAMBER DOOR ROPE GASKET	1
105	GASKET, G1 22X30, 3X2 WRC	1
22	380 BURNER GASKET HT	1
25	IGNITER GASKET	1
*	INSTRUCTIONS - 240011720	1

### KIT 550003278 -380 BURNER REPLACEMENT KIT INCLUDES:

POS	DESCRIPTION	QTY
21	BURNER 100 KW	1
22	BURNER GASKET 380	1
105	GASKET G1 22X30.3X2 WRC	1
*	KIT INSTRUCTIONS 2400011715	1

### KIT 550003250 - SPARK GENERATOR REPLACEMENT KIT INCLUDES:

POS	DESCRIPTION	QTY
24	IGNITER 115V	1
*	KIT INSTRUCTIONS 240011682	1

### KIT 550003606- COMBUSTION CHAMBER CLEANING KIT INCLUDES:

POS	DESCRIPTION	QTY
*	GLOVE, LATEX, BLK, LRG, S-19810	4
*	SHLD, HTEX, CLNG,	1
*	BAG, POLY, 12"X26", 2MIL, S5779	4
*	BRUSH, 2"X3"M W/HANDLE, 1" STIFF BRISTLES 240011640	1
105	COMB CHAMBER GASKET	1
18	BD, SEAL, HEAT EXCH DOOR, FRONT	1
22	BD, GASKET, BURNER	1
*	INSTRUCTIONS - 240012414	1

### KIT 550003249 - 240/380 IGNITION ELECTRODE REPLACEMENT KIT INCLUDES:

POS	DESCRIPTION	QTY
26	IGNITION ELECTRODE	1
25	IGNITION ELECTRODE GASKET	1
*	3 MM, HEX, WRENCH	
*	KIT INSTRUCTIONS 2400116821	1

\* NOT SHOWN

## KITS - OTHER MAJOR COMPONENTS

KIT 550003277 380 BLOWER REPLACEMENT KIT INCLUDES:		
POS	DESCRIPTION	QTY
12	FAN	1
13	GASKET FAN/AIR GASKET	1
10	O-RING VENTURI 70X3	1
22	BURNER GASKET 380	1
*	KIT INSTRUCTIONS 240011714	1

KIT 550003280 - 380 PUMP REPLACEMENT KIT INCLUDES:		
POS	DESCRIPTION	QTY
31	PUMP UP26-96 F	1
22	PUMP GASKET	2

## KITS - GAS VALVE & COMPONENTS

KIT 550003276 - 380 GAS VALVE REPLACEMENT KIT INCLUDES:		
POS	DESCRIPTION	QTY
49	O-RING GAS VALVE	2
50	GAS VALVE	1
105	GASKET - G1 22X30.3X2 WRC	2
*	KIT INSTRUCTIONS 2400011713	1

KIT 550003288 - GAS PIPE REPLACEMENT KIT INCLUDES:		
POS	DESCRIPTION	QTY
47	GAS PIPE	1
105	GASKET - G1 22X30.3X2 WRC	2
49	O-RING GAS VALVE	1
*	INSTRUCTIONS - 240011730	1

## KITS - AIR & GAS COMPONENTS

KIT 550003292 - 380 MIXER REPLACEMENT KIT INCLUDES:		
POS	DESCRIPTION	QTY
102	VENTURI	1
10	O-RING 70X3	1
105	GASKET - G1 22X30.3X2 WRC	1
*	INSTRUCTIONS - 240011731	1

KIT 550003291 - 380 FLUE CONNECTION REPLACEMENT KIT INCLUDES:		
POS	DESCRIPTION	QTY
4	380 FLUE CONNECTION ADAPTER	1
5	FLUE CONNECTION GASKET	1
101	GASKET FOR PIPE D.110	1
100	AIR IN TAKE GASKET D.160	1
8	TEST PORT PLUG	2
9	O-RING TEST PORT PLUG	2
52	FLUE SENSOR	1
*	SCREW 5P4.2 X 13 TC CR-ZN	4
*	LABEL TEST POINT	1
*	INSTRUCTIONS - 240011733	1

KIT 550003853 - GASKET FLUE CONNECTION REPLACEMENT KIT INCLUDES:		
POS	DESCRIPTION	QTY
7	AIR INLET GASKET	1
6	AIR INLET CAP	1
5	FLUE ADAPTER GASKET	1
9	O-RING 8.73 X 1.78	2
100	SEAL D160	1
*	RING D10	1
101	SEAL D11	1
*	INSTRUCTIONS - 240011733	1

KIT 550003286 - 380 AIR GAS COLLECTOR REPLACEMENT KIT INCLUDES:		
POS	DESCRIPTION	QTY
68	AIR GAS MANIFOLD	1
22	380 BURNER GASKET	1
13	GASKET, VENTURI/FAN/AIR DUCT	1
105	GASKET - G1 22X30.3X2 WRC	1
*	INSTRUCTIONS - 240011732	1

\* NOT SHOWN

## KITS - PIPING

### KIT 550003282 - SUPPLY PIPING REPLACEMENT KIT INCLUDES:

POS	DESCRIPTION	QTY
44	FLOW PIPE 1.100	1
35	O-RING, HX PIPE ADAPTER	2
36	ADAPTER, HX PIPE CONNECTION	1
28	GASKET, HX PIPE CONNECTION	1
42	CLIP-ADAPTER HX PIPE CONNECTION	1
45	HIGH LIMIT TEMPERATURE SWITCH	1
37	FLAT GASKET G1 1/2	1

### KIT 550003283 - RETURN PIPING REPLACEMENT KIT INCLUDES:

POS	DESCRIPTION	QTY
28	PUMP HX PIPE	1
37	FLAT GASKET G1 1/2	1
35	O-RING, HX PIPE ADAPTER	2
36	ADAPTER, HX PIPE CONNECTION	1
29	GASKET, HX PIPE CONNECTION	1
42	CLIP-ADAPTER HX PIPE CONNECTION	1

### KIT 550003287 - GAS SUPPLY CONNECTION REPLACEMENT KIT INCLUDES:

POS	DESCRIPTION	QTY
48	GAS CONNECTION	1
70	FOAM GASKET GAS CONNECTION	1
105	GASKET - G1 22X30.3X2 WRC	1

### KIT 550003281 - RETURN INLET ASSEMBLY REPLACEMENT KIT INCLUDES:

POS	DESCRIPTION	QTY
38	RETURN CONNECTION BLOCK	1
39	ON-BOARD DRAIN	1
32	FLAT GASKET- G1-1/2	2
71	FOAM GASKET WATER CONN.	1
*	KIT INSTRUCTIONS 2400011718	1

## KITS - CONDENSATE COMPONENTS

### KIT 550003279 CONDENSATE TRAP REPLACEMENT KIT INCLUDES:

POS	DESCRIPTION	QTY
53	CONDENSATE SYPHON	1
55	CONDENSATE SYPHON CUP	1
54	GASKET SYPHON CUP	1
56	CONDENSATE SYPHON NUT	1
*	KIT INSTRUCTIONS 240011716	1

### KIT 550003289 CONDENSATE PIPE REPLACEMENT KIT INCLUDES:

POS	DESCRIPTION	QTY
57	HOSE CONDENSATE TRAY	1
58	HOSE CONDENSATE TO HX	1
*	INSTRUCTIONS - 240011734	1

## KITS - SENSOR

### KIT 550003253 PRESSURE SENSOR REPLACEMENT KIT INCLUDES:

POS	DESCRIPTION	QTY
40	WATER PRESSURE SENSOR	1
41	CLIP, PRESSURE SENSOR	1
*	KIT INSTRUCTIONS 240011704	1

### KIT 550003528 - DOMESTIC HOT WATER SENSOR FOR INDIRECT STORAGE TANK HEAT ONLY BOILER KIT INCLUDES:

POS	DESCRIPTION	QTY
*	DHW TANK SENSOR	1
*	CLIP	1
*	THERMOPASTE	1
*	KIT INSTRUCTIONS 240012246	1

\* NOT SHOWN

## KITS - CONTROL BOARDS

### KIT 550003266 - PCB SCU-SO2 REPLACEMENT KIT INCLUDES:

POS	DESCRIPTION	QTY
88	PCB SCU-SO2	1
*	INSTRUCTIONS - 240011707	1

### KIT 550003267 - PCB INTERFACE REPLACEMENT KIT INCLUDES:

POS	DESCRIPTION	QTY
99	PCB INTERFACE OTZTC	1
*	INSTRUCTIONS - 240011708	1

### KIT 550003268 - PCB PCU-04 REPLACEMENT KIT INCLUDES:

POS	DESCRIPTION	QTY
86	PCB PCU-04	1
*	INSTRUCTIONS - 240011709	1

### KIT 550003269 - SAFETY PCB REPLACEMENT KIT INCLUDES:

POS	DESCRIPTION	QTY
81	CONTROLLER SAFETY PCB	1
*	INSTRUCTIONS - 240011710	1

### KIT 550003272 - CONFIGURATION KEY KIT INCLUDES:

POS	DESCRIPTION	QTY
*	PARAMETER STICK	1
*	INSTRUCTIONS - 240011712	1

## KITS - MANIFOLD

### KIT 550003352 - MANIFOLD REPLACEMENT KIT INCLUDES:

POS	DESCRIPTION	QTY
103	PIPING MANIFOLD	1
*	KIT INSTRUCTIONS 2400011831	1

## KITS -CONTROL, & JACKET PANELS

### PANEL ASSEMBLIES

KIT #	DESCRIPTION	DESCRIPTION	QTY
550003270	CONTROL BOX WITH DISPLAY	CONTROL COVER	1
		CONTROL	1
550003293	LEFT PANEL ASSEMBLY	LEFT PANEL	1
		GASKET	2
550003294	RIGHT PANEL ASSEMBLY	RIGHT PANEL	1
		GASKET	2
550003295	FRONT PANEL ASSEMBLY INCLUDES: BEZEL, INSULATION AND LOGO	FRONT PANEL	1

## WIRING - REPLACEMENT

PN	DESCRIPTION
711217400	TH WIRING DUOZ EX.
721796800	FAN WIRING
721804700	IGNITOR WIRING
721807000	GAS VALVE WIRING
721838500	SAFETY TH/FAN WIRING
721935400	SENSORS WIRING
722266400	CONTROL BOX/PCB SCU CONNECTING
722267400	SECONDARY ELECTRIC BOX POWER WI
722410200	POWER SUPPLY PUMP UP26-96F WIRIN
722577700	PCB POWER WIRING SECONDARY BOX
722577800	POWER SUPPLY WIRING
764808500	PUMP WIRING

\* NOT SHOWN



2201 DWYER AVENUE, UTICA, NY 13501  
TEL. 800 253 7900  
[WWW.ECRINTERNATIONAL.COM](http://WWW.ECRINTERNATIONAL.COM)

ALL SPECIFICATIONS SUBJECT TO CHANGE WITHOUT NOTICE.  
©2020 ECR INTERNATIONAL, INC.