



CONDENSING WATER BOILER

HELIX VLT Wall Hung



95% AFUE EFFICIENCY

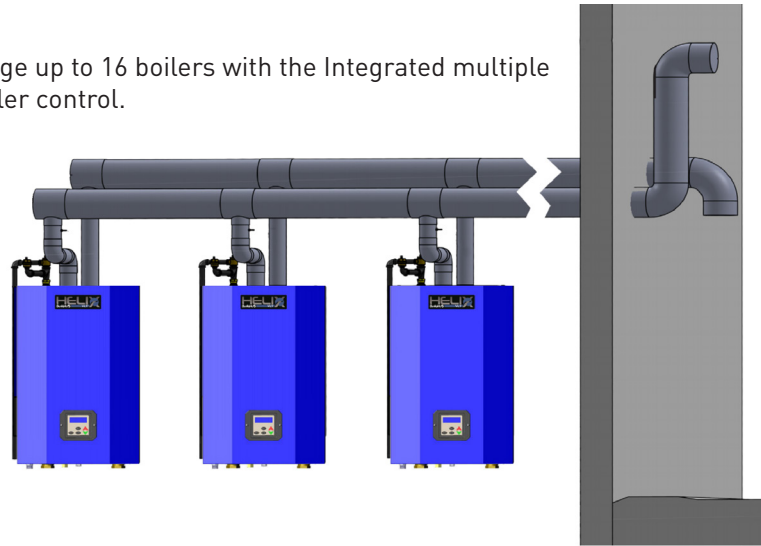
The VLT gas-fired, wall hung modulating condensing boiler is innovative, efficient and dependable with its stainless steel vertically mounted heat exchanger and 95% AFUE efficiency. The patented vertical heat exchanger features wide, smooth water ways that help remove hard water deposits and prevent scaling - ensuring a longer boiler life. Its advanced control automatically regulates boiler operation for minimal fuel usage. The increased efficiency of the VLT could save you up to 40% on your heating bill each year.

HELIX VLT FEATURES

- 5 Sizes Available: 50 - 200 MBH
- Built-In Primary/Secondary Piping Saves installation time and space
- Built-In Low Water Cut Off (LWCO)
- 5:1 Turndown Ratio
- Patented Vertical Heat Exchanger Patent No. US 10,012,413,B2 Low Maintenance, Self-Cleaning
- Warranty Coverage 15 Year Limited Heat Exchanger Warranty Free 2 Year Parts & Labor Limited Warranty*
- Built by American Craftsmen

TAKE ADVANTAGE OF
REBATES
with **95% Efficiency**

Stage up to 16 boilers with the Integrated multiple boiler control.



*Unit must be registered within 60 days from the date of original installation. All terms of Trinity Extended Service Agreement apply.



VLT STAINLESS STEEL CONDENSING

The Helix VLT "Stainless Steel Condensing" high efficiency, wall hung modulating boiler features a unique 316L/444 stainless steel heat exchanger designed in the U.S., for the U.S. This vertically mounted heat exchanger features wide, smooth water ways that help remove hard water deposits and prevent scaling which ultimately means longer life and better value.



Dunkirk Boilers has been keeping generations warm since 1928. We take pride in having grown up right alongside the generations we serve with products that continue to meet your ever changing needs. That's why we have introduced the H2O Series - a full line of Stainless Steel, Single and Dual Coil Indirect Water Heaters, Buffer Tanks and Storage Tanks. A Dunkirk VLT and an H2O Stainless Steel Indirect Water Heater are the perfect match.



Dunkirk H2O Indirect Water Heaters are available in 30 to 150 gallon capacities and also feature 316L stainless steel construction as well as top connections for ease of installation. In terms of efficiency, the H2O is so well insulated that water will lose only a half degree for every hour on standby. Like the VLT, the H2O's smooth coil design prevents corrosion so it is also an excellent value.

Each Helix VLT boiler produced is subjected to a rigorous set of quality control checks before it leaves our factory. Dunkirk test fires each boiler and checks all of the electrical, plumbing, pressure vessel and combustion set up parameters - fine tuning the product's performance prior to approving the unit for shipment. We even include the final computer generated results for your professional contractor to reference while completing your installation.



ANNUAL SAVINGS!

Just look at what you could be saving annually...

Add up the savings with a Helix VLT:

- 95% AFUE
- Sealed Combustion
- Outdoor Temperature Reset*

The increased efficiency of the VLT could save you up to 40% on your heating bill each year.

If you pay \$1800 annually to heat your home, you could save as much as \$720 per year.

That's \$3,600 over 5 years!**

Since we go the extra mile to deliver a quality product we offer not only a 15 year limited manufacturer's warranty, we also back it up with an industry-leading first year \$500 Heat Exchanger Labor Warranty.

Our H2O Single Coil Indirect Water Heaters feature a limited lifetime warranty and optional Comfort Plus Parts & Labor warranties are available for all our products.

*A factory standard Outdoor Temperature Reset adjusts water supply temperature for best possible fuel economy based on actual seasonal conditions.

**Individual savings may vary.



A CLOSER LOOK VLT

Control Features

- 5:1 Turndown ratio
- Easy to understand English text display
- Outdoor reset maximizes fuel economy
- Priority domestic hot water meets changing demands
- Integrated multiple boiler control eliminates the need for costly multiple boiler controls
- Can be remotely mounted with standard thermostat conductor wiring



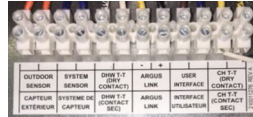
LWCO

- Factory wired and installed
- Probe-type with test button
- Meets code where required
- Provides added protection



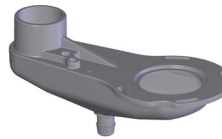
Easy Access

- Easy accessible low voltage terminal strip



Flue Collector

- Non-Metallic
- Corrosion resistant



Wall Mount Bracket

- Bracket Included
- Wall Mount



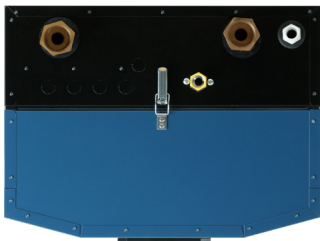
Patented Heat Exchanger

- 316/444 stainless steel fin tube
- Vertically mounted
- Self-cleaning
- Designed in the U.S. for the U.S.
- 150 psi MAWP



Boiler Top Connections

Approved for PVC, CPVC, and Polypropylene venting.



Boiler Bottom Connections

Replacement ready with 1-1/4" piping connection and low pressure drop. No high head pump required.

RATINGS

MODEL	AHRI CERTIFIED RATINGS ⁽¹⁾					DIMENSIONS					
	Max Input MBH	Min Input MBH	Heating Capacity MBH ⁽²⁾	Net Water MBH ⁽³⁾	Efficiency AFUE% ⁽²⁾	Vent Size Diameter ⁽⁴⁾	Water Content GAL.	-A- Width	-B- Height	-C- Depth	Weight Lbs.
DKVLT-050	50	10	46	40	95%	2"	1.1	20"	31"	14-3/4"	111
DKVLT-075	75	15	69	60	95%	2"	1.1	20"	31"	14-3/4"	111
DKVLT-100	100	20	91	79	95%	2"	1.1	20"	31"	14-3/4"	111
DKVLT-150	150	30	139	121	95%	3"	1.8	23"	42"	16"	182
DKVLT-200	200	40	185	161	95%	3"	1.8	23"	42"	16"	182

(1) 1000 Btu/hr (British Units Per Hour)

(2) Heating capacity and AFUE (Annual Fuel Utilization Efficiency) are based on DOE (Department of Energy) test procedures.

(3) Net Water Rating shown based on piping and pickup allowance of 1.15. Consult manufacturer before selecting boilers for installation having unusual piping and pickup requirements, such as intermittent system operation, extensive piping systems, etc.

(4) Refer to IOM and vent pipe manufacturer's instructions for equivalent lengths and approved venting materials.

Adapters and fittings used with all vent systems shall be from the same manufacturer and compatible with vent pipe.

CONNECTIONS

Water Supply & Return	1-1/4" NPT	
Gas Connections	1/2" (50/100/150)	3/4" (150/200)
Condensate Drain	3/4" NPT	

ELECTRICAL

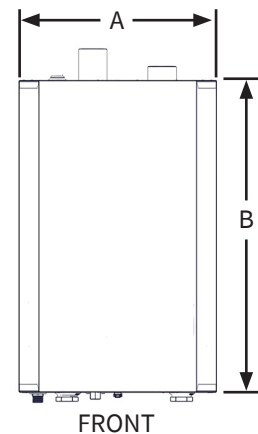
120 V ac, 60 hertz, 1 phase, less than 12 amps (15 amp circuit recommended)

STANDARD EQUIPMENT

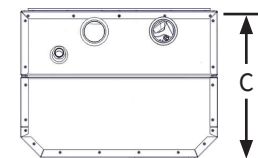
Wall Mounted: Bracket included.
 Boiler Control Module: Automatic Line Voltage/Intermittent Direct Spark Ignition, User Display interface, Outdoor Temperature Sensor.
 Heat Exchanger: High grade 316L/444 Stainless Steel Fin Coil w/Flame Sight Glass.
 Combustion: Gas Valve with Premix Venturi and Blower, Durable Stainless Steel Mesh Modulating Burner, Direct Spark Igniter, Flame Sensor & LP Conversion Kit.
 Electrical: Low Voltage Terminal Strip, High Voltage Junction Box and Transformer.
 Other: Factory installed probe-type Low Water Cut Off with test feature, 30 PSI Safety Relief Valve, Boiler Drain Valve and Condensate Drain with built in trap.

OPTIONS

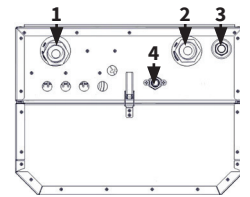
Central Heating Pump available (Taco 007 or Grundfos UP15-42F)
 Concentric Vent Kit (2" and 3"), System Sensor (For multiple boiler applications)



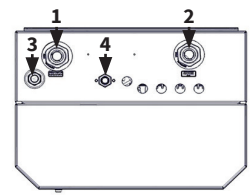
FRONT



TOP



BOTTOM (50/75/100)



BOTTOM (150/200)

1. Water Return
2. Water Supply
3. Condensate Drain
4. Gas Connection



ECR International, Inc. 2201 Dwyer Avenue, Utica, NY 13501
 Tel. 800 253 7900
 www.ecrinternational.com



All specifications subject to change without notice.
 ©2020 ECR International, Inc.
 PN 240008986 Rev. [09/16/20]