

Dunkirk  **HELIX^{VLT}**
VERTICAL LASER TUBE

Innovative. Efficient. Dependable. Dunkirk.

Helix VLT

96% AFUE Residential Gas Modulating Condensing Boiler



INNOVATIVE — Because we wouldn't have it any other way...

The fact is Dunkirk has been designing, manufacturing, and marketing residential condensing boilers longer than any other North American company. We were the first to introduce 95% efficient condensing boilers. Unlike most North American boiler companies Dunkirk designed a heat exchanger for our demanding American condensing boiler customers. Our American craftsmen are certified to test and apply the crucial ASME mark for safe condensing boiler pressure vessels in our factory. **Simply put - if you want the most advanced boiler available from an American manufacturer, you want Dunkirk.**

Introducing the latest in condensing boiler technology.



Dunkirk's new Helix VLT "Vertical Laser Tube," condensing boiler features a revolutionary, vertically mounted, helical fin tube heat exchanger, made of 316L/444 stainless steel.

This self cleaning design features wide, smooth waterways that help remove hard water deposits and prevent scaling.

Dunkirk understands that there are more important things in life to spend your money on than heating bills; that's why we're proud to bring you the most efficient, forward-thinking home heating solutions available today.

Home heating goes well beyond the initial cost of the system. Your boiler selection impacts your monthly bills. Efficiency, ease of maintenance, and longevity all add up. Spikes in utility rates or costly maintenance and repairs can easily derail the best financial plan.

EFFICIENT — Just look at what you could be saving annually...

The new VLT features an EnergyStar Rated 96% AFUE. Just add up the savings:

-96% AFUE

-Sealed Combustion

-*Built-in Outdoor Temperature Reset

(*A factory standard Outdoor Temperature Reset adjusts water supply temperature for best possible fuel economy based on actual seasonal conditions.)

The increased efficiency of the VLT could save you up to 40% on your heating bill each year.

If you pay \$1,800 annually to heat your home, you could save as much as \$720 per year.

That's \$3,600 over 5 years![†]

[†](Individual savings may vary).

The Dunkirk VLT's original design incorporates easy maintenance, durability and safety to make the most of your home heating investment. The self cleaning heat exchanger features wide smooth waterways that help remove hard water deposits and prevent scaling. A corrosion resistant CPVC flue collector adds to the longevity of the boiler. The VLT's sealed housing reduces noise for quiet comfort in any living space. Since most municipal codes require heating systems to incorporate a Low Water Cut Off (LWCO) to guard against unsafe operation, the Dunkirk VLT features a built-in LWCO.

DEPENDABLE — Dunkirk holds our boilers to the highest quality standards and we stand behind our products...

Each VLT boiler produced is subjected to a rigorous set of quality control checks before it leaves our factory. Dunkirk checks all of the electrical, plumbing, pressure vessel and combustion set up parameters prior to approving a VLT for shipment. We even include the final computer generated results for your professional contractor to reference while completing your installation. Every Dunkirk VLT is backed by a 15 year limited manufacturer's heat exchanger warranty, and the availability of optional Comfort Plus Parts & Labor Extended Warranties ensure you peace of mind for years to come.



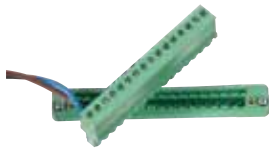


Factory wired and installed, probe-type low water cut off with test button.



Corrosion resistant CPVC flue collector.

Built in primary/secondary piping with pump.



Simplified electrical connections with removable terminal block.

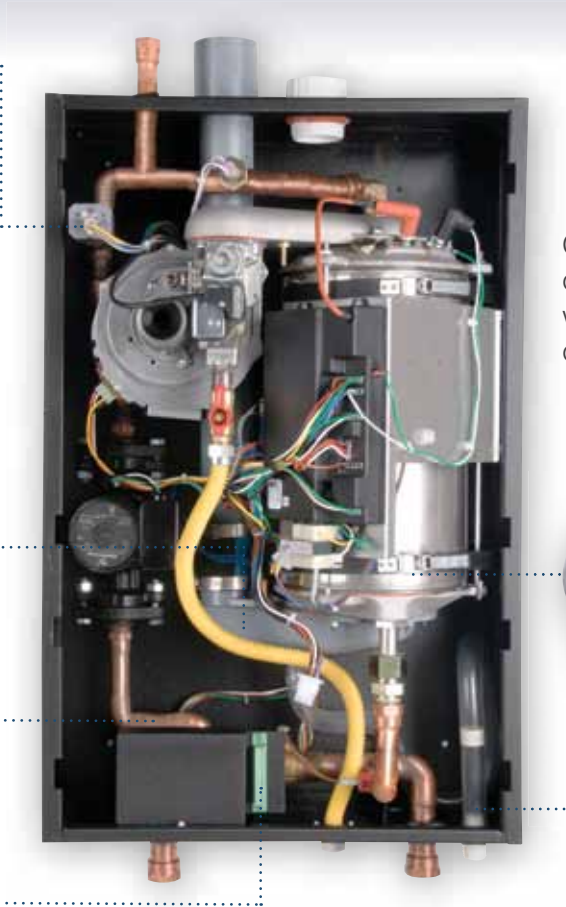
Top Connections



Bottom Connections



Replacement ready with 1-1/4" piping connections and low pressure drop - no high head pump required.



Jacket slides on and off for quick access.



Control features simple text display, outdoor reset, priority domestic hot water and integrated multiple boiler control for up to 16 modules.



Innovative 316L/444 stainless steel fin tube heat exchanger.

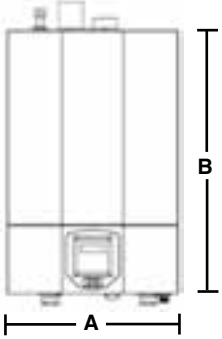
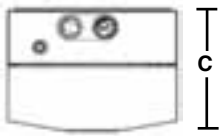


Integral Condensate Trap.



Wall mount bracket included



Dunkirk VLT Natural or Propane Gas-Fired Modulating Condensing Hot Water Boiler

Dimensions/Weights	Model	Boiler Input Rate (MBH) ⁽¹⁾		Heating Capacity (MBH) ⁽¹⁾⁽²⁾	Net I=B=R Rating, Water (MBH) ⁽¹⁾⁽³⁾	AFUE % ⁽²⁾
		Max.	Min.			
	DKVLT-050	50	10	46	40	96.0
	DKVLT-075	75	15	69	60	96.0
	DKVLT-100	100	20	91	79	96.0
	DKVLT-150	150	30	139	121	96.0
	DKVLT-200	200	40	185	161	96.0
(1) 1000 Btu/hr (British Thermal Units Per Hour) (2) Heating Capacity and AFUE (Annual Fuel Utilization Efficiency) are based on DOE (Department of Energy) test procedures. (3) Net I=B=R Ratings based on piping and pickup allowance of 1.15. Contact Technical Support before selecting boiler for installations having unusual piping and pickup requirements, such as intermittent system operation, extensive piping systems, etc.						
General Information (See Installation, Operation and Maintenance Manual for complete instructions)						
	Clearances (4) Required distances measured from boiler. (5) Service, proper operation clearance recommendation.	Top	Combustible Materials (Required) ⁽⁴⁾		Service ⁽⁵⁾	
		Left Side	0" (0 cm)	14" (36 cm)		
		Right Side	0" (0 cm)	0" (0 cm)		
		Front	0" (0 cm)	6" (16 cm)		
		Back	0" (0 cm)	0" (0 cm)		
		Bottom	0" (0 cm)	12" (32 cm)		
		Combustion Air/Vent Piping	0" (0 cm)	6" (16 cm)		
		Hot Water Piping	1/2" (1.3 cm)	6" (16 cm)		
	Combustion Air & Vent Pipe Equivalent Length (Schedule 40 PVC)		2" Pipe 050	2" Pipe 075/100	3" Pipe 075/100	3" Pipe 150/200
		Min. Length	6 Ft. (1.8 m)	6 Ft. (1.8 m)	6 Ft. (1.8 m)	6 Ft. (1.8 m)
		Max. Length	100 Ft. (30.5 m)	50 Ft. (15.2 m)	100 Ft. (30.5 m)	100 Ft. (30.5 m)
Notes: 1 - 90° Elbow = 5 Ft. (1.6 m), 1 - 45° Elbow = 3.5 Ft. (1.1 m), 1 - 2" x 3" Adapter = 0 Ft. (0 m), Concentric Vent Kit = 5 Ft. (1.6 m) equivalent length.						
Connections		Return/Supply Water	Gas In	Condensate Drain		
050/075/100		1-1/4" NPT	1/2" NPT	3/4" NPT		
150/200		1-1/4" NPT	3/4" NPT	3/4" NPT		
Electrical		120 Volts AC, 60 hertz, 1 phase, Less than 12 amps (15 amp circuit recommended)				
Water Content		050/075/100 - 1.1 Gallons, 150/200 - 1.8 Gallons				
Standard Equipment		Mounting Wall: Wall Bracket included. Boiler Control Module: Automatic Low Voltage/Intermittent Power Reset. Controls up to 16 boilers for multiple boiler applications. User Display interface: Easy programming with text display. Outdoor Temperature Sensor included. Heat Exchanger: High grade 316L/444 Stainless Steel Fin Coil with Flame Sight Glass. Built-in Primary/Secondary Manifold Piping and Pump. Combustion: Gas Valve with Premix Venturi and Blower, Durable Stainless Steel Mesh Modulating Burner with 5:1 turn down ratio, Direct Spark Igniter, Flame Sensor and LP Conversion Kit included. Electrical: Detachable Low Voltage Terminal Strip, High Voltage Junction Box and Transformer. Other: Factory installed probe-type Low Water Cut Off with test feature, 30 PSI Safety Relief Valve, Boiler Drain Valve and Condensate Drain with built in trap.				
Options		Central Heating Pump (Taco 007 or Grundfos UP15-42F), Concentric Vent Kit (2" and 3"), System Sensor (For Multiple Boiler Applications), Computer Interface				
Dimensions						
Weights						
Models	050 075 100	150 200				
Width (A)	20" 508 mm	23" 584 mm				
Height (B)	31" 787 mm	42" 1092 mm				
Depth (C)	14" 356 mm	16" 406 mm				
Bracket (D)	28" 711 mm	40" 1016 mm				
Ship Wgt.	111 lbs. 50 kg	~ 182 lbs. 83 kg				
Boiler Wgt.	91 lbs. 41 kg	~ 157 lbs. 71 kg				

PN 240008986 Rev. 5/11

Contractor Assistance: 800.325.5479



P.O. Box 4729
 Utica, New York 13504
 tel: 315.797.1310 • fax: 315.797.3762
 www.dunkirk.com

