

# Quantum 95M-200

## Natural or Propane Gas-fired Modulating Condensing Boiler



95%  
AFUE



# Dunkirk®

*America's Hottest Boiler Value!*

An ISO 9001-2000 Certified Company

# The Value of Efficiency



High efficiency is your solution to today's ever-increasing energy costs. As an ENERGY STAR Partner, Dunkirk is proud to offer the 95% AFUE Quantum 95M-200 gas-fired, condensing, hot water boiler.

The Quantum 95M-200 was the **first** 95% AFUE boiler available. Check with your local utility company regarding the availability of high efficiency rebates



95%  
AFUE

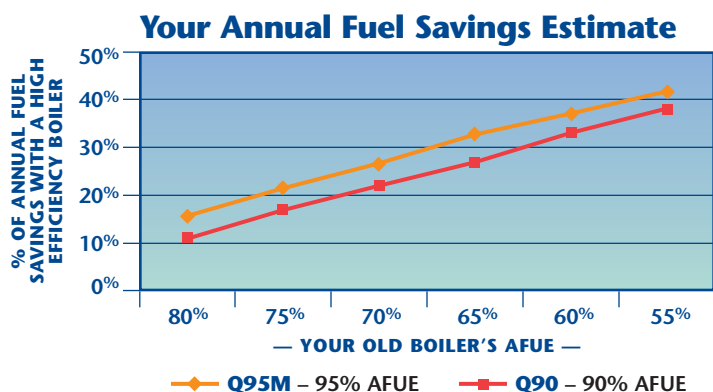


## Your leading value in... Cost Saving Features

- **Infinitely Modulating Capacity from 80 to 200 MBH**  
An advanced microprocessor control continuously monitors supply and return water temperature, adjusting boiler output to match building load – ideal for applications with multiple zones.
- **Outdoor Temperature Reset**  
Additional savings with factory standard control, which adjusts the water supply temperature for best possible fuel economy based on actual seasonal conditions.
- **Domestic Hot Water Priority**  
Used with an indirect hot water heater, the UB95M saves energy by redirecting heat where and when it's needed. No waiting for hot water.

## Annual Fuel Savings

The chart below can be used to estimate annual fuel cost savings for space heating when replacing an old inefficient boiler with a new condensing boiler.

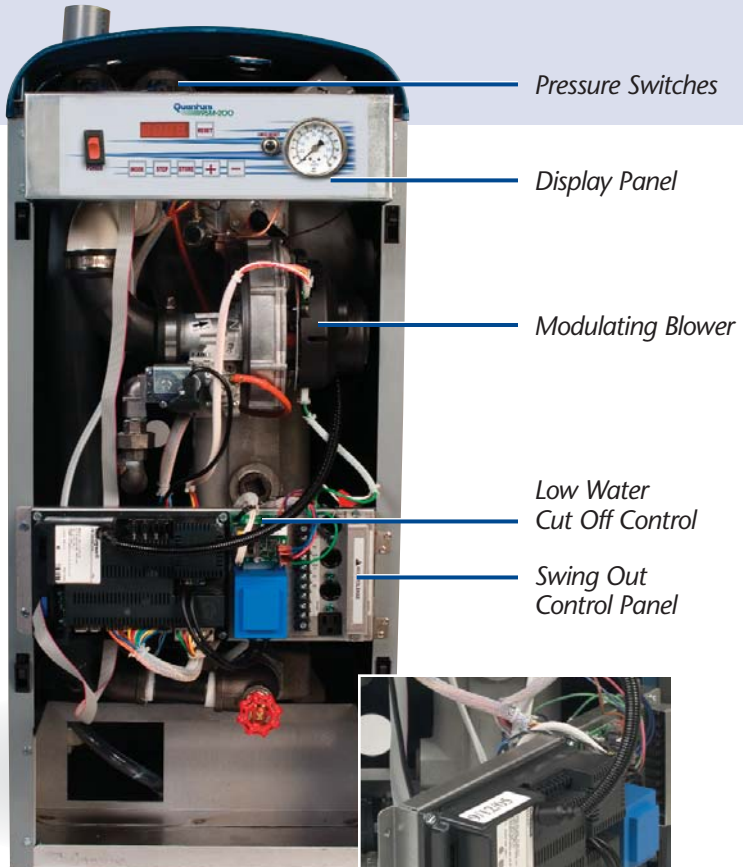


## Reliability and Peace of Mind

- **15-Year Limited Manufacturer's Warranty**
- **Optional Comfort Plus 5 or 10 Year Extended Parts and Labor Warranty available.**



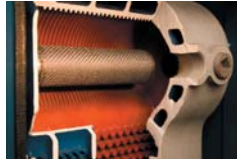
# Q95M-200 Installation Features



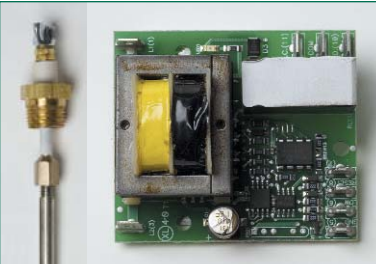
Easily accessible front mount controls.



Digital display/user interface for real time operating diagnostics and programming information.



Low Pressure Drop, ASME Certified Monoblock Cast Aluminum Heat Exchanger – lightweight and corrosion resistant.



Factory installed, probe type, LWCO accurately senses water level to help prevent dry firing. Meets local codes requirements.

The “Dealer-Driven Design” of the Q95M-200 is engineered with installation flexibility and convenience that benefit both the installer and the homeowner.

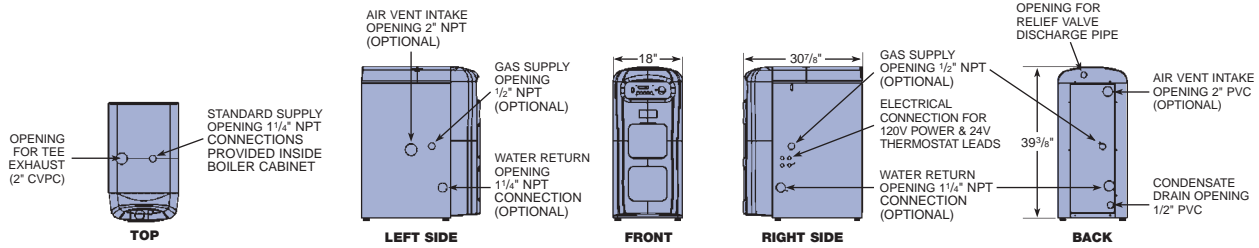
- Intake & Flue gasses can be piped with readily available 3" PVC up to 100 equivalent feet.
- Option of left, right or rear exit for return plumbing and gas piping.
- Piping connection options on rear and top of units facilitate multiple boiler installations with boilers located in close quarters.
- Integral Condensate Trap (No Field Assembly Required).
- Standard 115V convenience outlet.

## Contractor Benefits

- **EASY INSTALLATION.**
- Ideal for high efficiency replacement jobs, new homes, radiant heating, and domestic hot water applications.



100% factory tested



### QUANTUM 95M-200 RATINGS

| MODEL    | INPUT (MBH) |     | HEATING CAPACITY (MBH) | I=B=R NET RATING (MBH) | AFUE (%) | FLUE DIAMETER | SHIPPING WEIGHT (LBS.) |
|----------|-------------|-----|------------------------|------------------------|----------|---------------|------------------------|
| Q95M-200 | Max         | 200 | 190                    | 165                    | 95       | 3"            | 284                    |
|          | Min         | 80  | 76                     | 66                     | 95       |               |                        |

### Specifications

- Gas Fired Direct Vent Condensing Hot Water Boiler
- Uses natural or LP gas
- May be installed on combustible flooring (No Carpets)
- 8" clearance to rear, 1" clearance to top, front, left side, right side and base to combustible construction
- Option of left, right, or rear exit for return plumbing and gas piping
- 8" clearance to side where exits for air intake, gas, water and electrical installation
- 8" clearance to top, 24" clearance to front and left side, 12" clearance to rear for service
- 0" clearance for vent and air intake pipes to combustible clearances
- Water content in heat exchanger is 2.6 gallons.

### Connections

- 120 Volts AC, 60 hertz, 1 phase, less than 12 amps
- Vent pipe and air intake pipe
  - Vent Pipe - first 2.5 feet is schedule 80 2" CPVC (provided), then schedule 40 3" PVC
  - Air intake - schedule 40 3" PVC
- Water In/ Out ..... 1-1/4" NPT
- Gas In ..... 1/2" NPT
- Condensate Drain ..... 1/2" PVC
- Vent length runs - minimum of 15 ft. with a maximum of 100 equivalent ft.

### Standard Equipment

- Aluminum monoblock boiler with painted metal and plastic jacket
- High limit Aquastat
- Circulator (Taco 007 or Grundfos) with isolation ball valves
- Manual reset LWCO
- Pressure gauge
- Temperature display
- 30 psi ASME rated relief valve
- Air purge vent
- Service switch
- Service receptacle outlet
- Microprocessor based modulating control
- Modulating burner
- Modulating automatic gas valve
- Modulating blower
- Direct Spark Igniter
- Manual Reset casting temperature switch
- Air proving / blocked vent safety assembly
- Integral condensate trap
- Outdoor Temperature Sensor with cover
- LP Conversion Kit standard

### Options

- Concentric Vent Kit
- AMB Multiple Boiler Control - outdoor reset, priority override, lead boiler run time rotation. Available in two sizes to allow stage firing of up to 8 boilers.

MEA #33906-E



Since 1928. America's Hottest Boiler Value.



An ISO 9001-2000 Certified Company



85 MIDDLE RD DUNKIRK, NY 14048  
 716/366-5500 FAX 866/432-7329  
 e-mail: heating@dunkirk.com  
 web site: www.dunkirk.com



**USA Contractor Assistance:**  
**800-325-5479**